

Odell House
Rochambeau Headquarters

Concept Design v. 4
February 22, 2024

amaze DESIGN

Table of Contents

00 **Museum & Exhibits**
Programming Notes
First Floor and Second Floor Plans

01 **First Floor Plans**
First Floor Plan
North Room Lobby, North Addition
West Room Multiuse
Revolutionary War Rooms
Southwest Room Fireplace

02 **Second Floor Plans**
Second Floor Plan
Second Floor East Plan
Second Floor Southeast Room
Second Floor West Collections Room
Weight Considerations

Programming Notes

ABOUT THIS DOCUMENT

Version 4 of the concept document is intended to summarize key programming decisions for each room in the house.

Earlier versions of this concept document presented three options which were the subject of multiple presentations and discussions with the Friends of OHRH, the Town of Greenburgh and STA Architects.

These plans represent a consensus on physical space planning decisions and on the interpretive focus of the rooms, broadly speaking.

The specific themes, topics and exhibit ideas shown in these plans are place holders for discussion, development, design, vetting and approval to be accomplished in the next phase of work.

This summary is intended to form the basis for further exhibit development and for architectural and building systems design.

PROJECT GOALS

Museum Goals

- Focus on the time periods most relevant to OHRH: the Revolutionary War era, including July 6, 1781 - August 18, 1781 and the Odell family era 1785 - 1990.
- Become a trusted and authentic source of information about the 1781 encampment and its role in the chain of events that led to the end of the Revolutionary War.
- Tell an inclusive story of the Odell farm, one that gives voice to all the people that lived and worked here.
- Depict how the house changed over time.
- Develop and coordinate content between exhibits, educational programs and web-based resources.
- Cultivate existing and new partnerships between organizations of all sizes that help the OHRH fulfill its mission.

Exhibition Goals

- Design the exhibits for people with diverse abilities, accommodating a wide range of preferences, abilities, and mobility; provide an accessible alternative to physically visiting the second floor.
- Safely display photographs, documents and artifacts in the collection to illustrate the Odell Family era.
- Foreground the events that happened in and around the house which led to the allied victory at Yorktown; show how winning the war was only possible with our French allies.
- Use architectural details, models and/or illustrations to show the evolution of the house and who occupied it.
- Ensure exhibit and program content is accessible and aligned with New York state curriculum standards and that OHRH becomes a valuable educational resource for students.

Exhibit Floor Plans

KEY DECISIONS

1. The primary interpretive focus of the museum is on the time periods most relevant to OHRH:

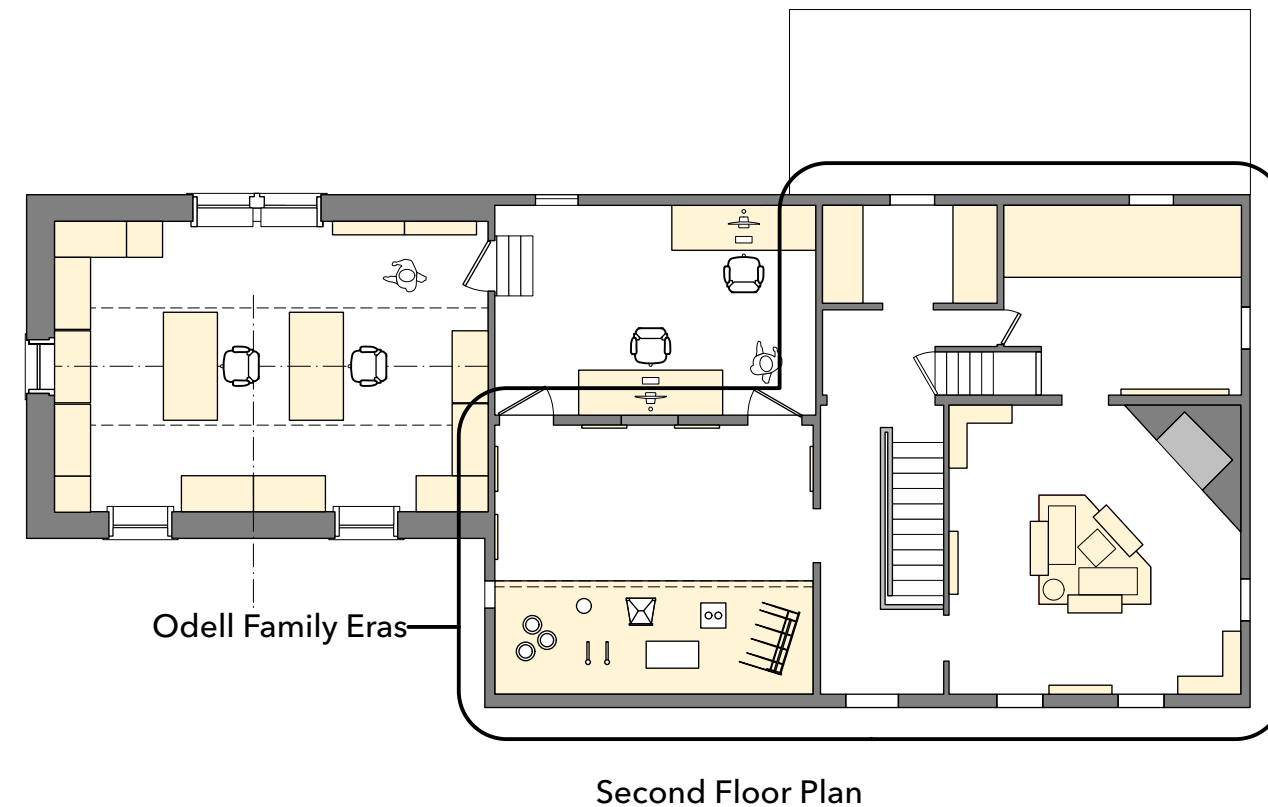
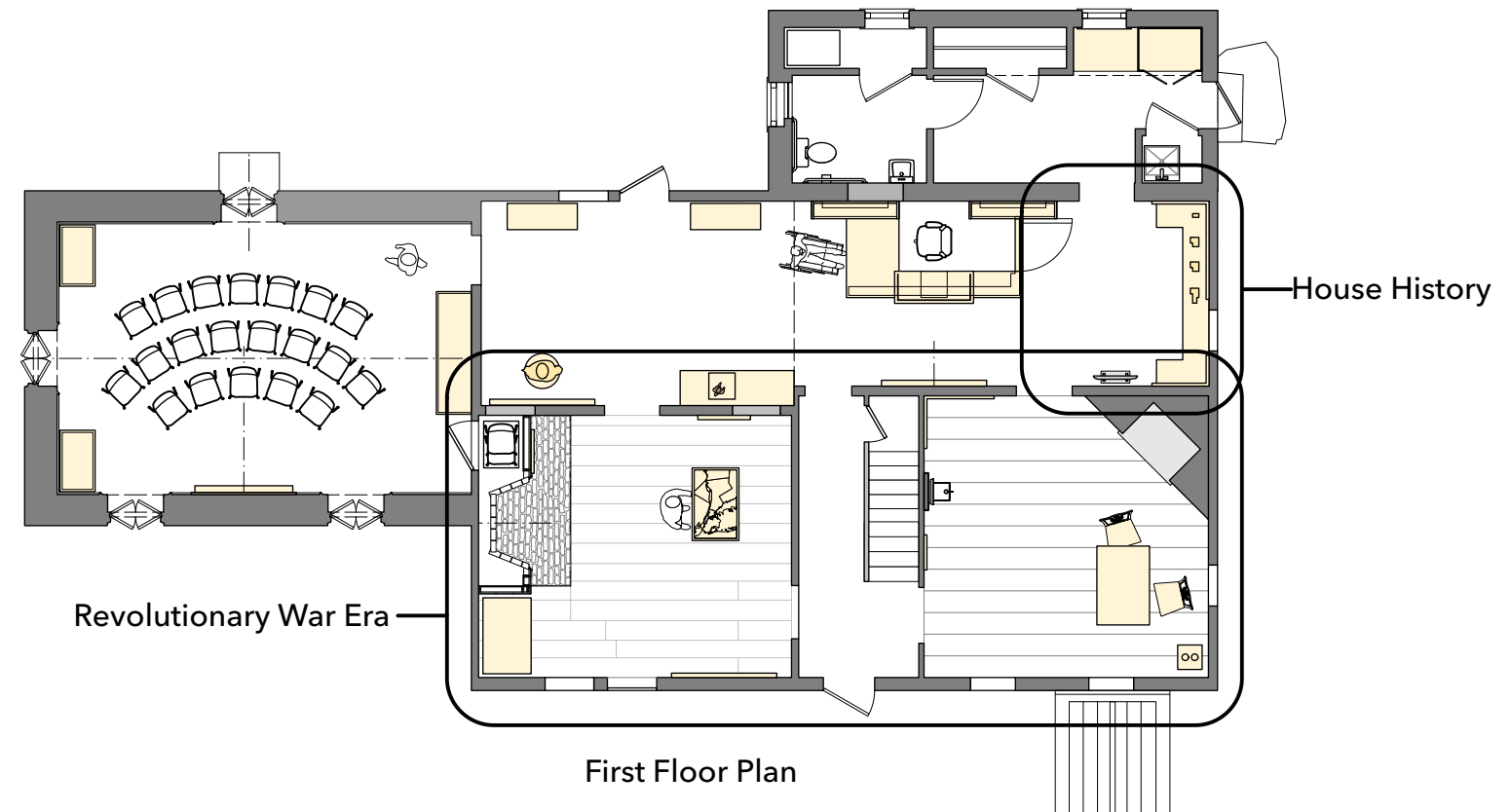
- the Revolutionary War era, including the 1781 encampment
- the Odell family era 1785 - 1990

2. Secondary interpretive focus includes the history of the house and land from before the colonial era through present day.

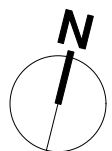
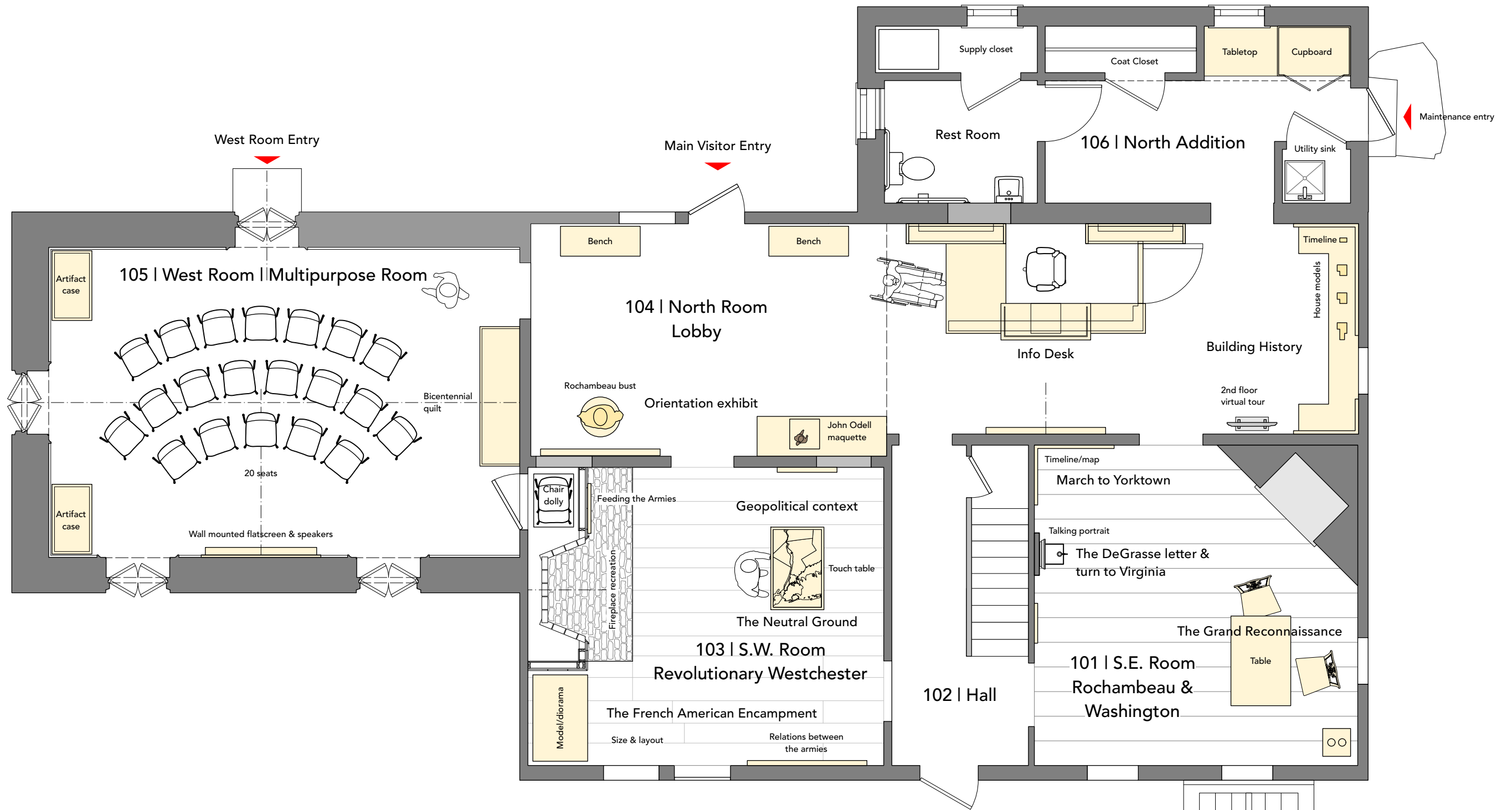
3. The Revolutionary War Era is interpreted primarily on the first floor

4. The Odell Family Era is interpreted primarily on the second floor

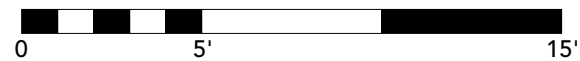
5. This history of the house is interpreted primarily in the first floor north room.



First Floor Exhibit Plan



Scale: 3/16" = 1'-0"



First Floor: 104 North Room Lobby, 106 North Addition

KEY DECISIONS

The North Room functions as a lobby and includes three main areas.

1. An orientation area located directly opposite the main entry door that includes bench seating, an open area for small tour group gathering and an orientation exhibit on the south wall

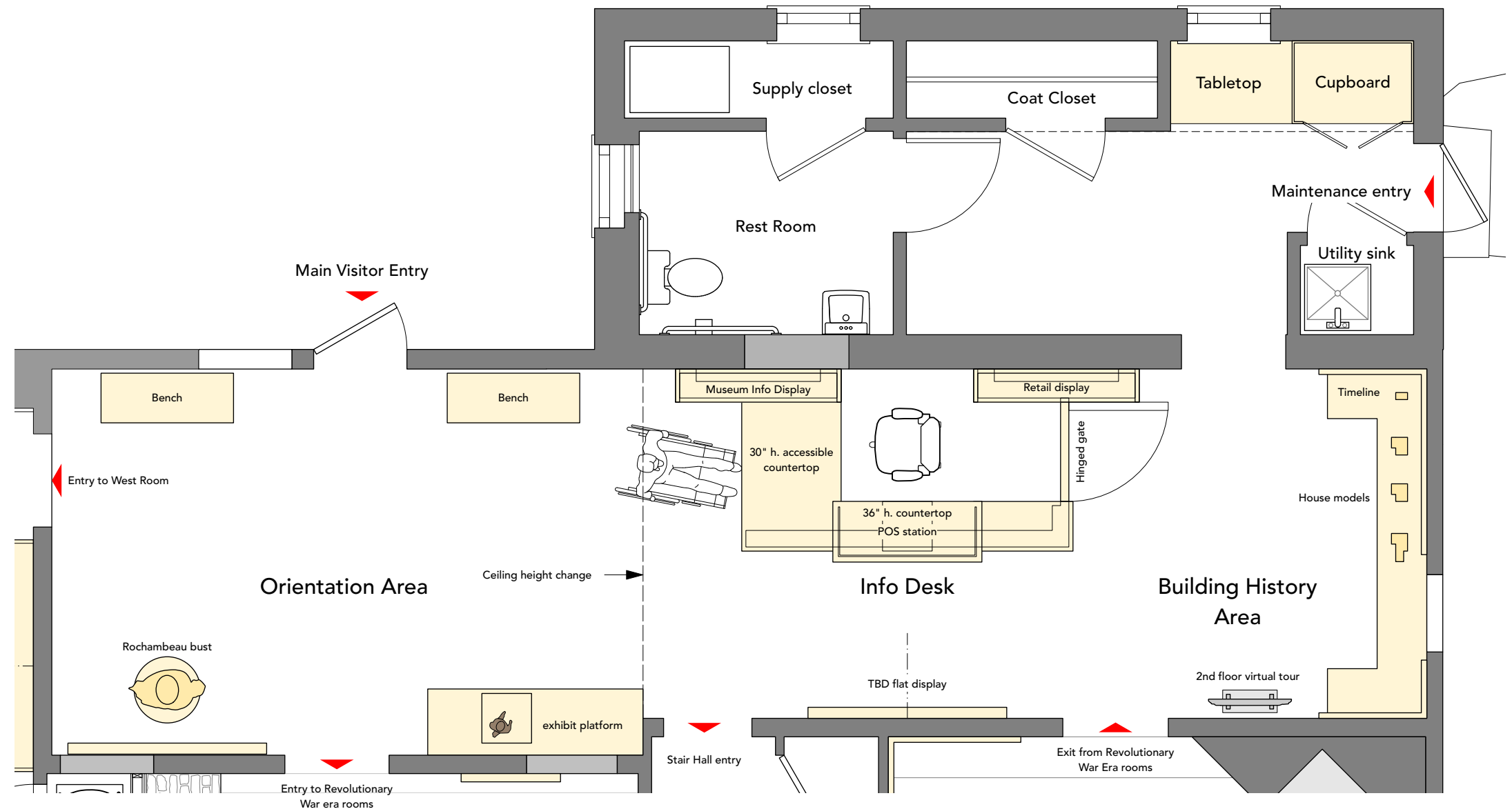
2. An information desk located on the north wall to include:

- an accessible countertop,
- museum information signage,
- retail shelving,
- point of sale station

3. A building history area located on the east wall to include:

- depiction of the original Dutch cottage and three subsequent phases of expansion
- the history of this place, from before European settlement through the current restoration effort
- a touchscreen tour of the second floor exhibits

A single doorway between the North Room and North Addition is located on the east side of the rooms. The existing doorway between the rooms on the west side of the North Addition will be eliminated.

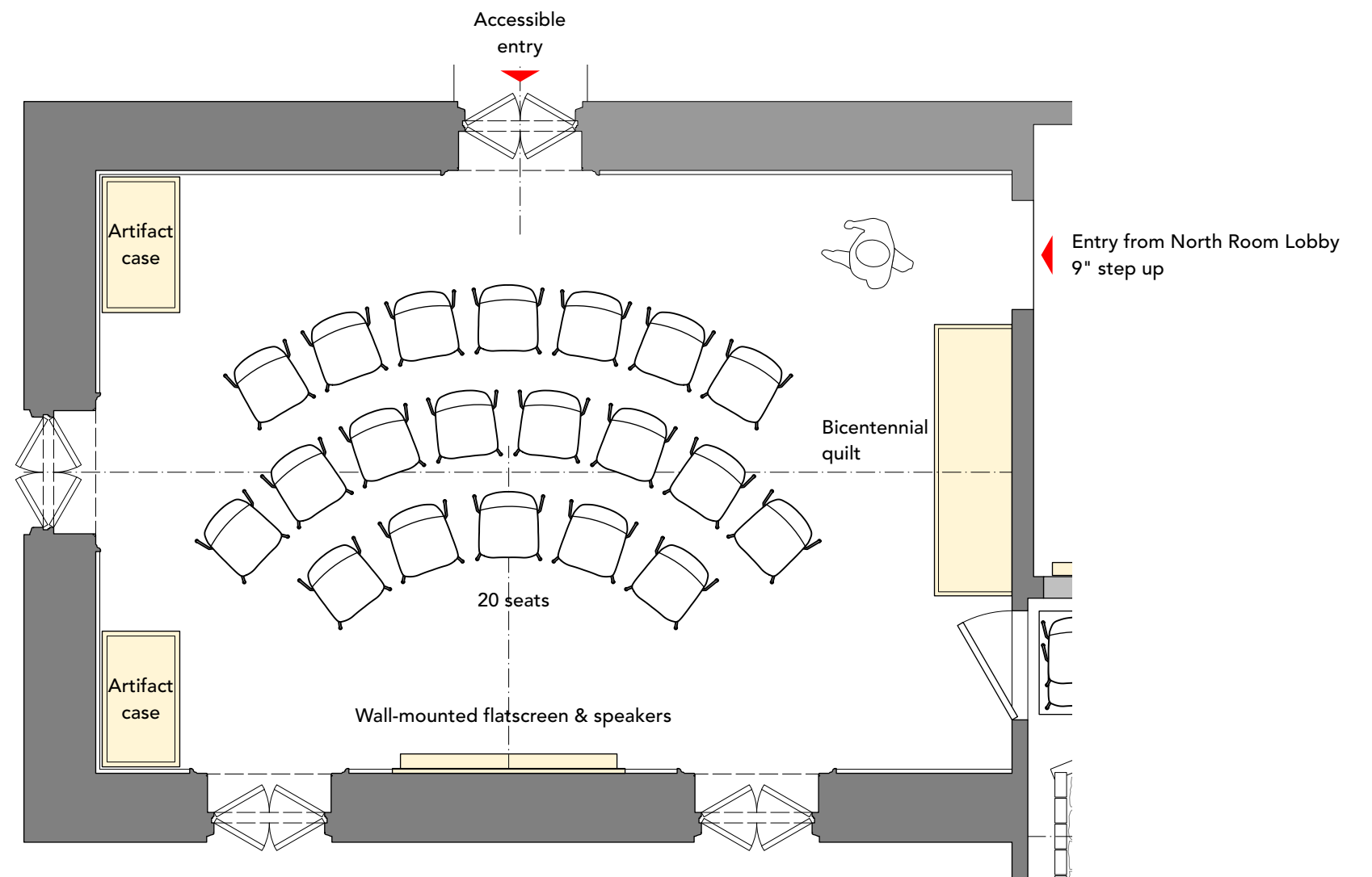


First Floor: 105 West Room

KEY DECISIONS

The West Room accommodates three main uses:

1. as a theater, to screen an orientation film for a small seated audience facing a large flatscreen display and speakers mounted on the south wall.
2. as a gallery, to host changing exhibitions of objects from the collection, displayed in artifact cases
3. as a meeting room, to accommodate:
 - presentations to a seated audience of up to 20 people; see Southwest room fireplace page for chair storage
 - museum programs for small group activities yet to be determined



First Floor: Revolutionary War Era Rooms

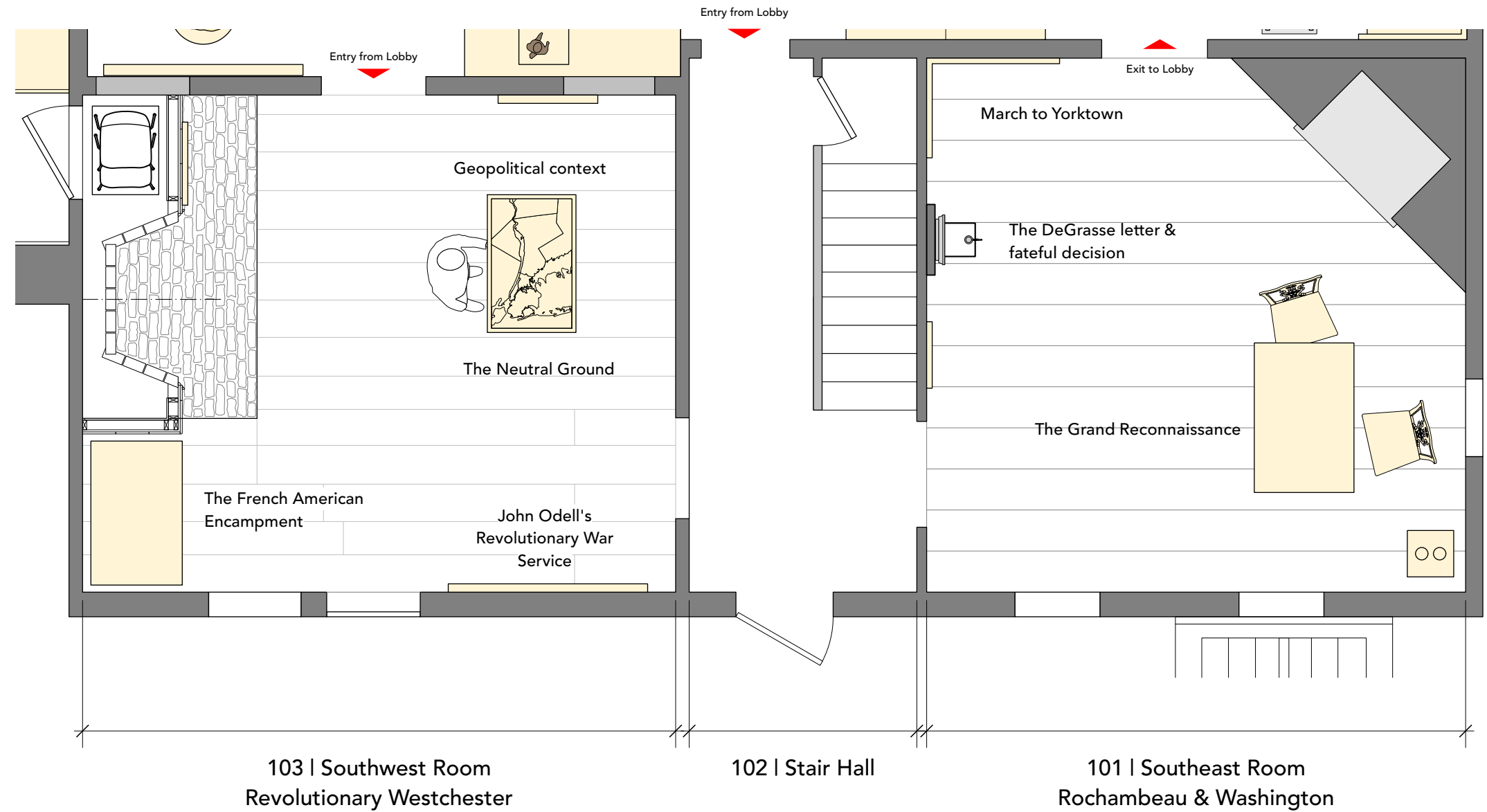
KEY DECISIONS

The Revolutionary War Era Rooms are a sequence of two rooms separated by the stair hall. The first room is intended to prepare visitors to appreciate the significance of an event that took place in the second room.

1. Exhibits in the Southwest Room focus on Revolutionary War era events in Westchester County leading up to and including the 1781 encampment.

2. Exhibits in the Southeast Room focus on the decision made here to march to Yorktown.

The topics and display techniques suggested in the exhibit plan are place holder ideas, yet to be vetted and developed further.



First Floor: Southwest Room Fireplace

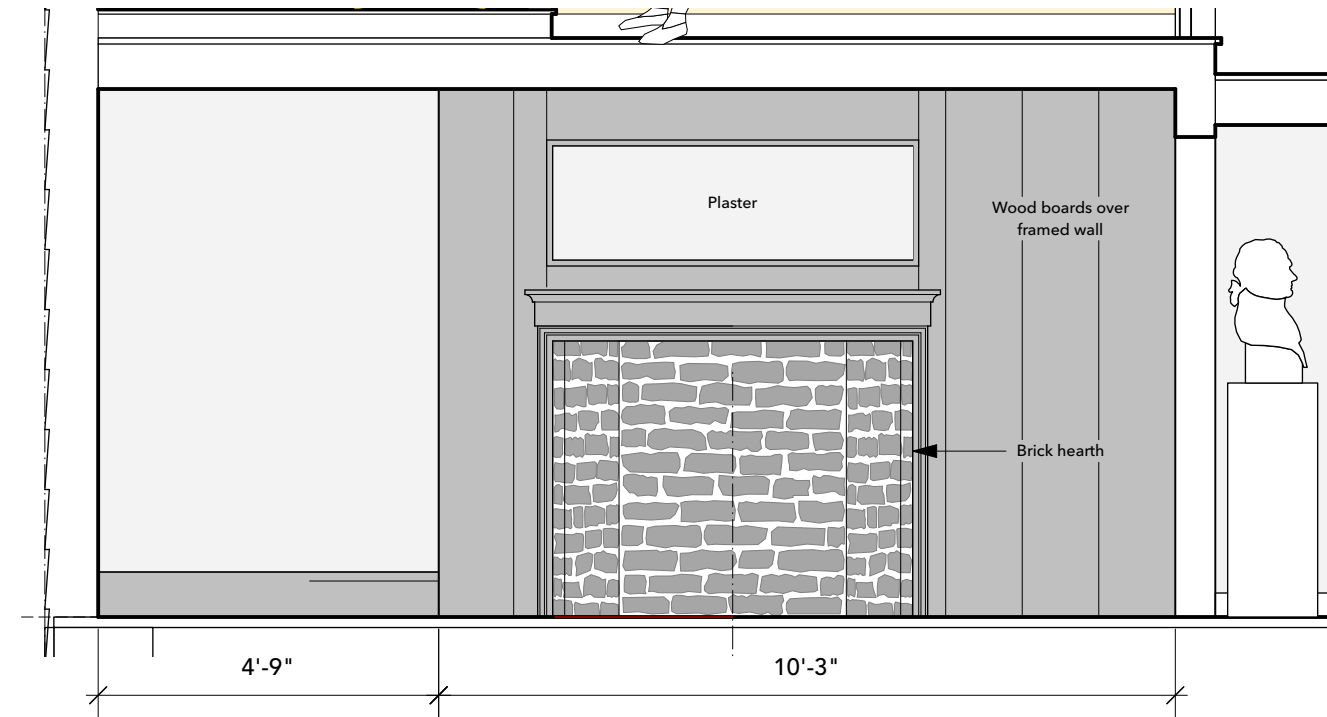
KEY DECISIONS

The first floor southwest room includes a recreated fireplace based on 1979 Dan Hopping drawings, but modified to accommodate museum needs.

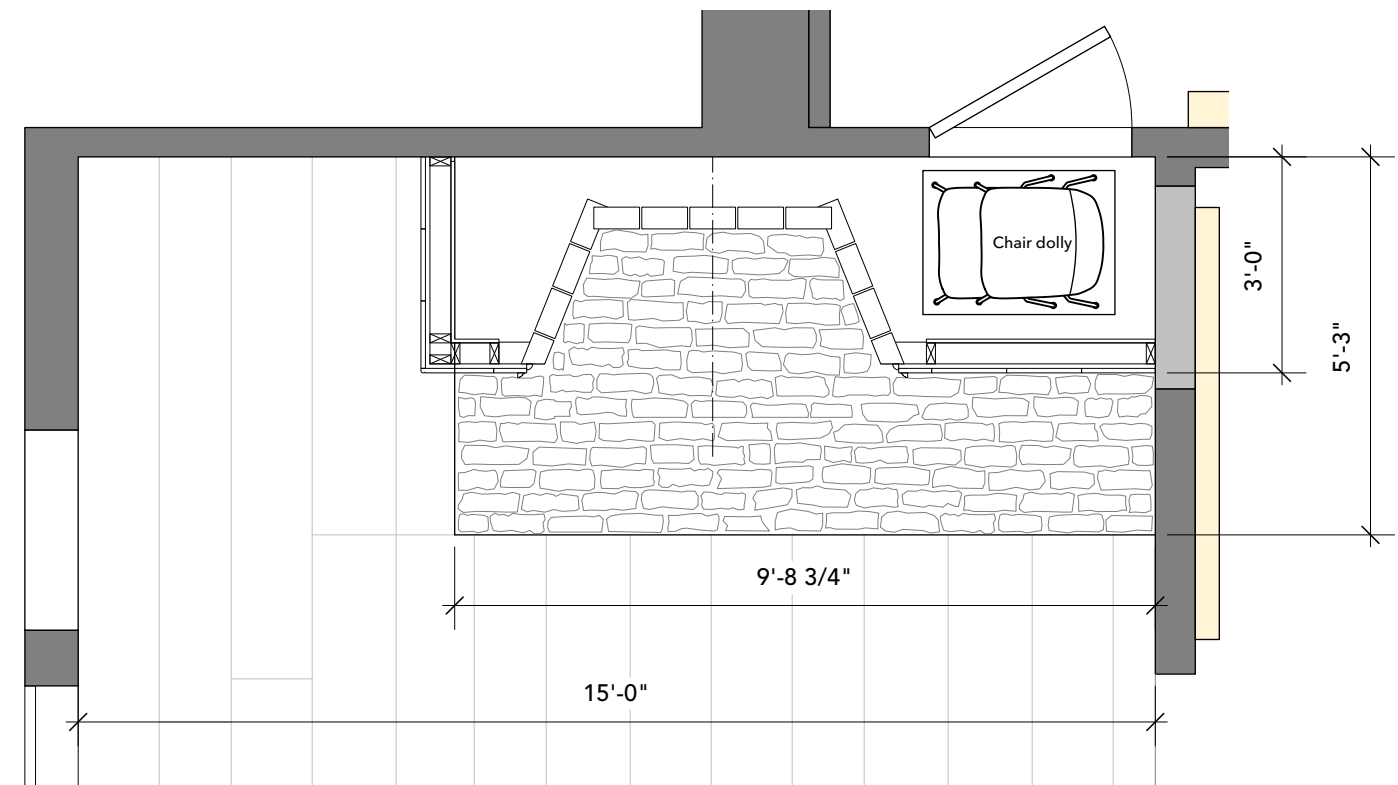
The fireplace recreation does not extend into the second floor.

A structure necessary to support a brick hearth will be needed below in the crawl space

Space behind the fireplace will be used as a closet with access from the adjacent West Room, intended for stackable chair storage.

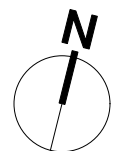
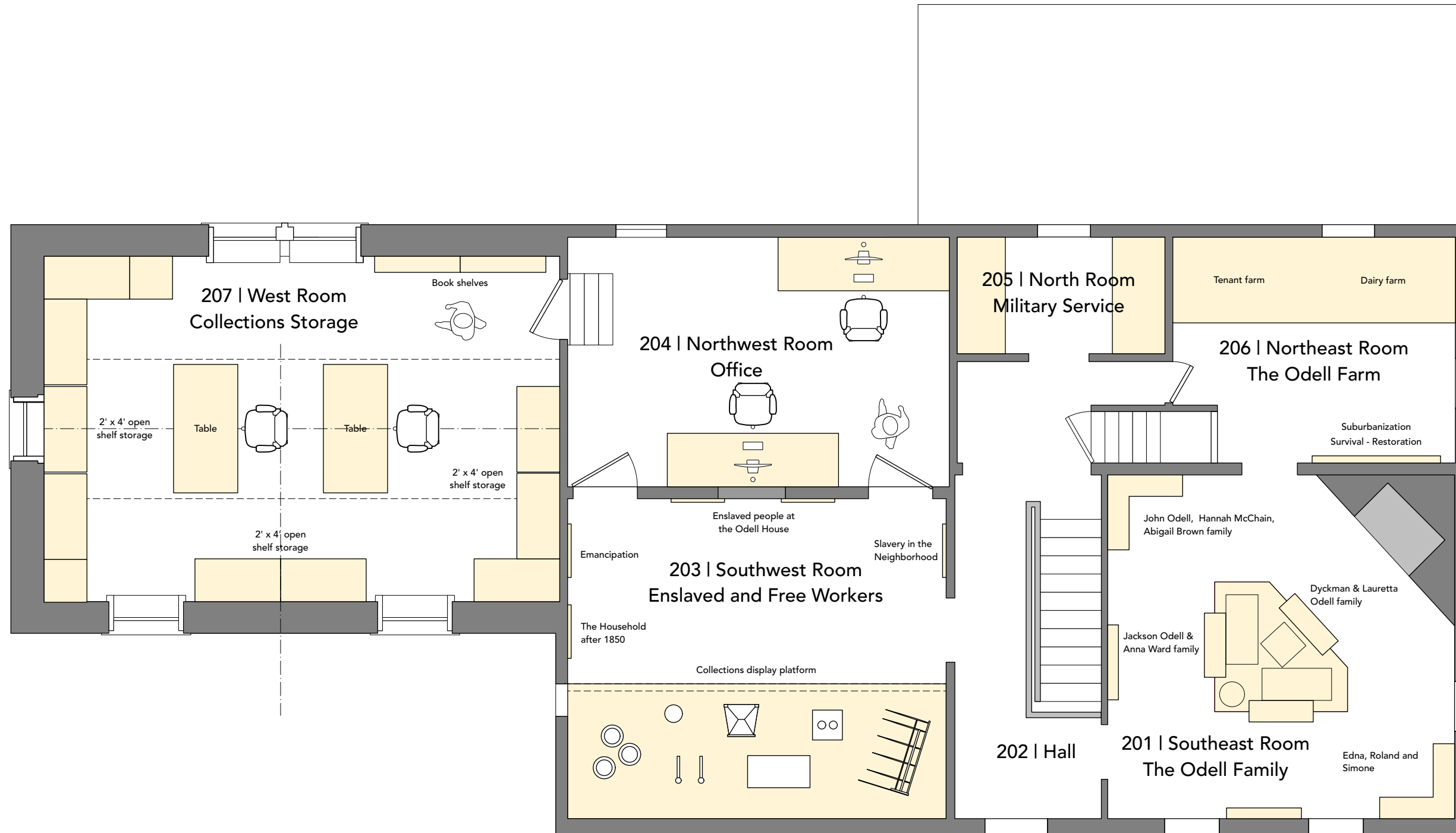


Elevation

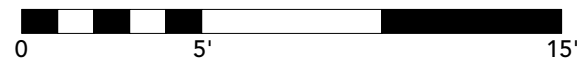


Plan

Second Floor Exhibit Plan



Scale: 3/16" = 1'-0"



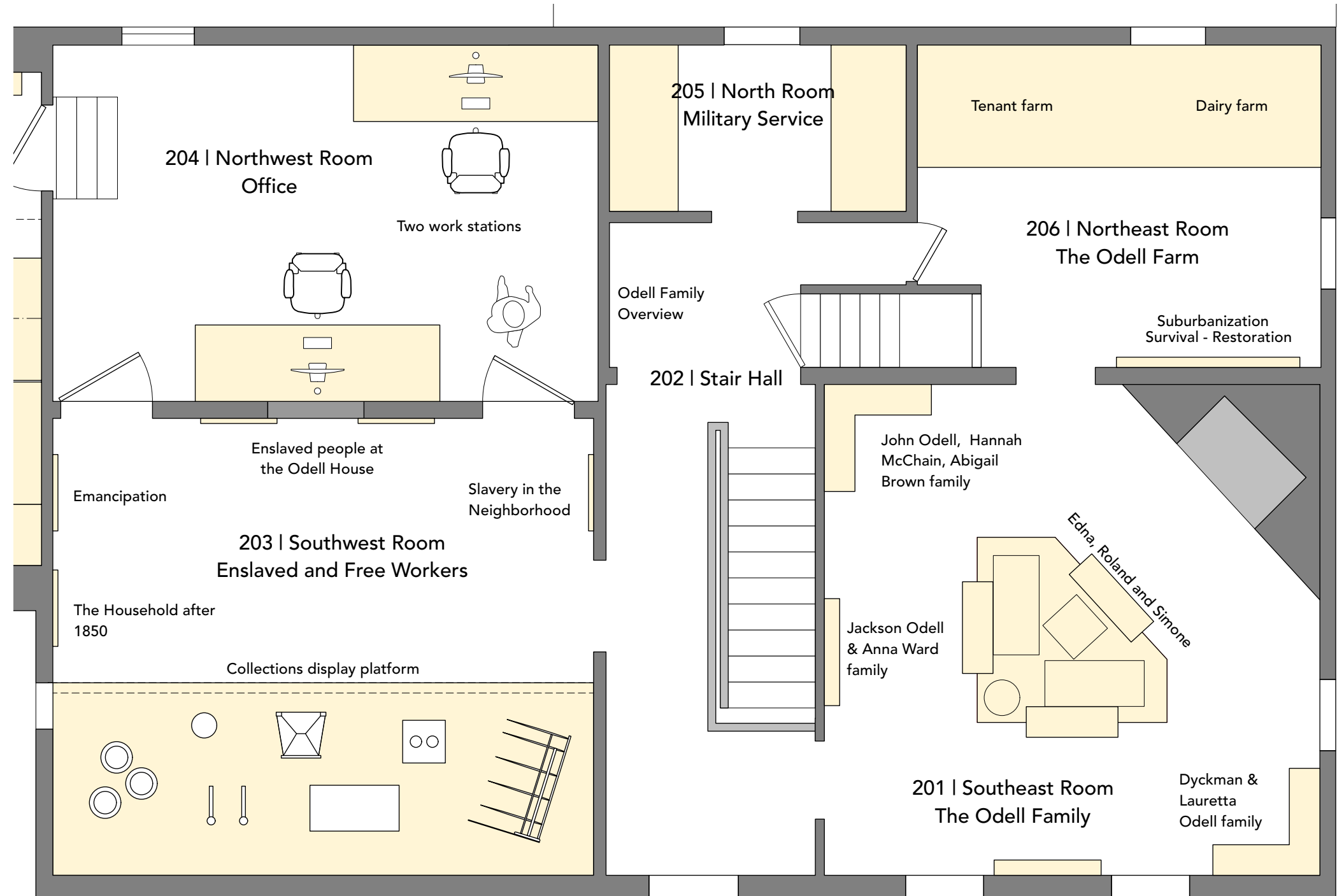
Second Floor Exhibit Plan

KEY DECISIONS

Exhibits on the second floor are located in a set of rooms that starts with the stair hall landing. Rooms are organized thematically.

The themes listed here are place holder ideas, yet to be vetted and developed further.

1. A wall at the west side north end of the Stair Hall provides an overview of the Odell family
2. The small north room honors generatons of Odell family military service
3. The northeast room traces the evolution of the farm and the land around it from the colonial era through present-day restoration.
4. The southeast room focuses on the four generations of Odell family members who lived and worked here.
5. The Southwest room interprets enslaved and free workers who lived and worked here. The opening between the Southwest Room and stair hall should be 36" wide
6. The northwest room is used as an office, workroom and possible public display expansion space. Two doors between Room 203 and 204 make possible a circular route through the two rooms. Doors should be 36" width.

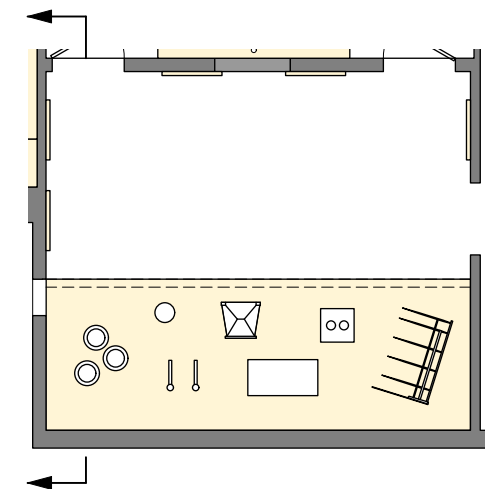
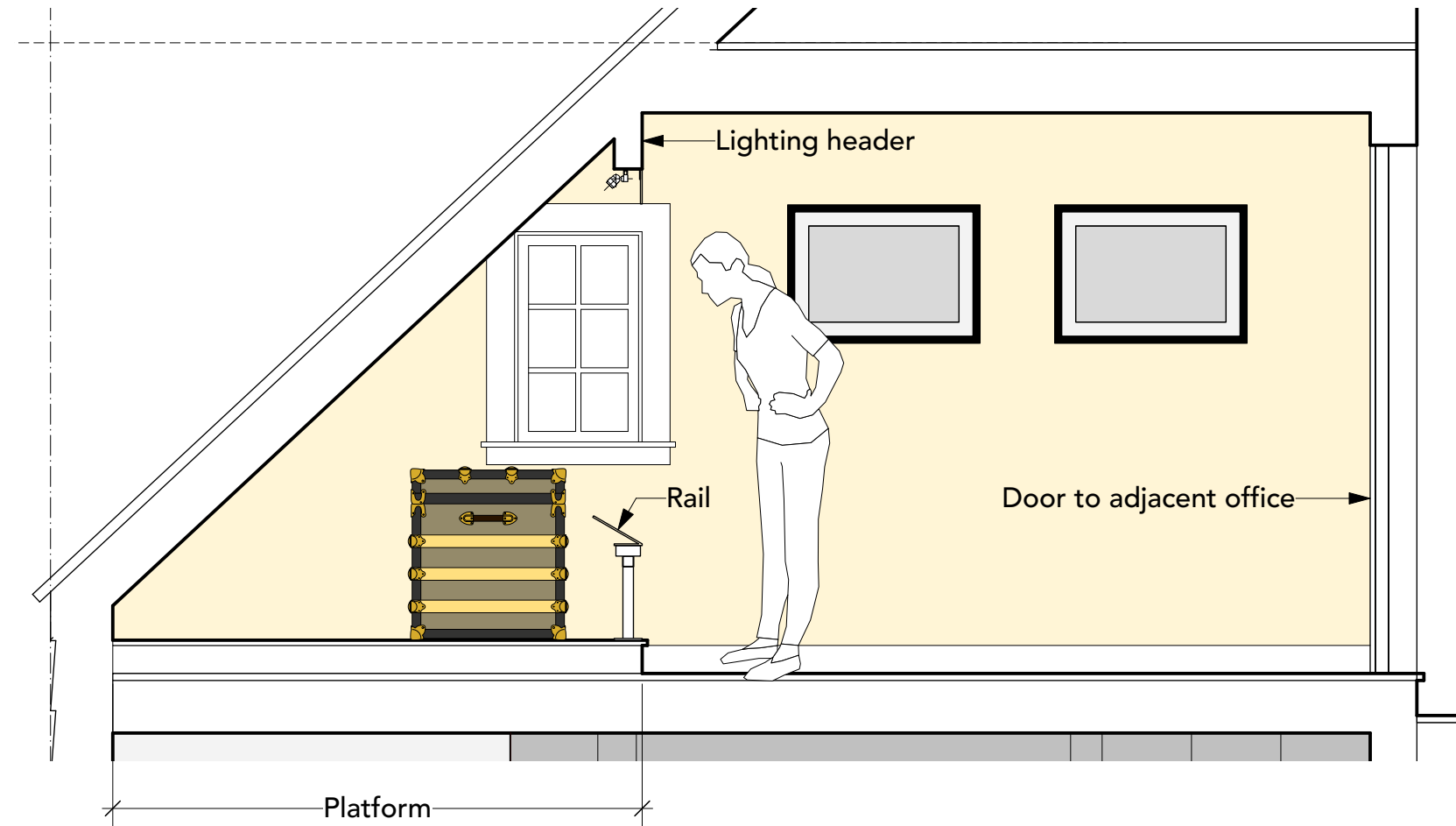


Second Floor Southwest Room

KEY DECISIONS

Exhibits in the second floor Southwest Room include a low platform, rail and header on the south side of the room. This area is intended to display objects from the collection and to usefully occupy an otherwise inaccessible space.

The north side of the room is intended for wall mounted exhibits only.



Southwest Room Key Plan

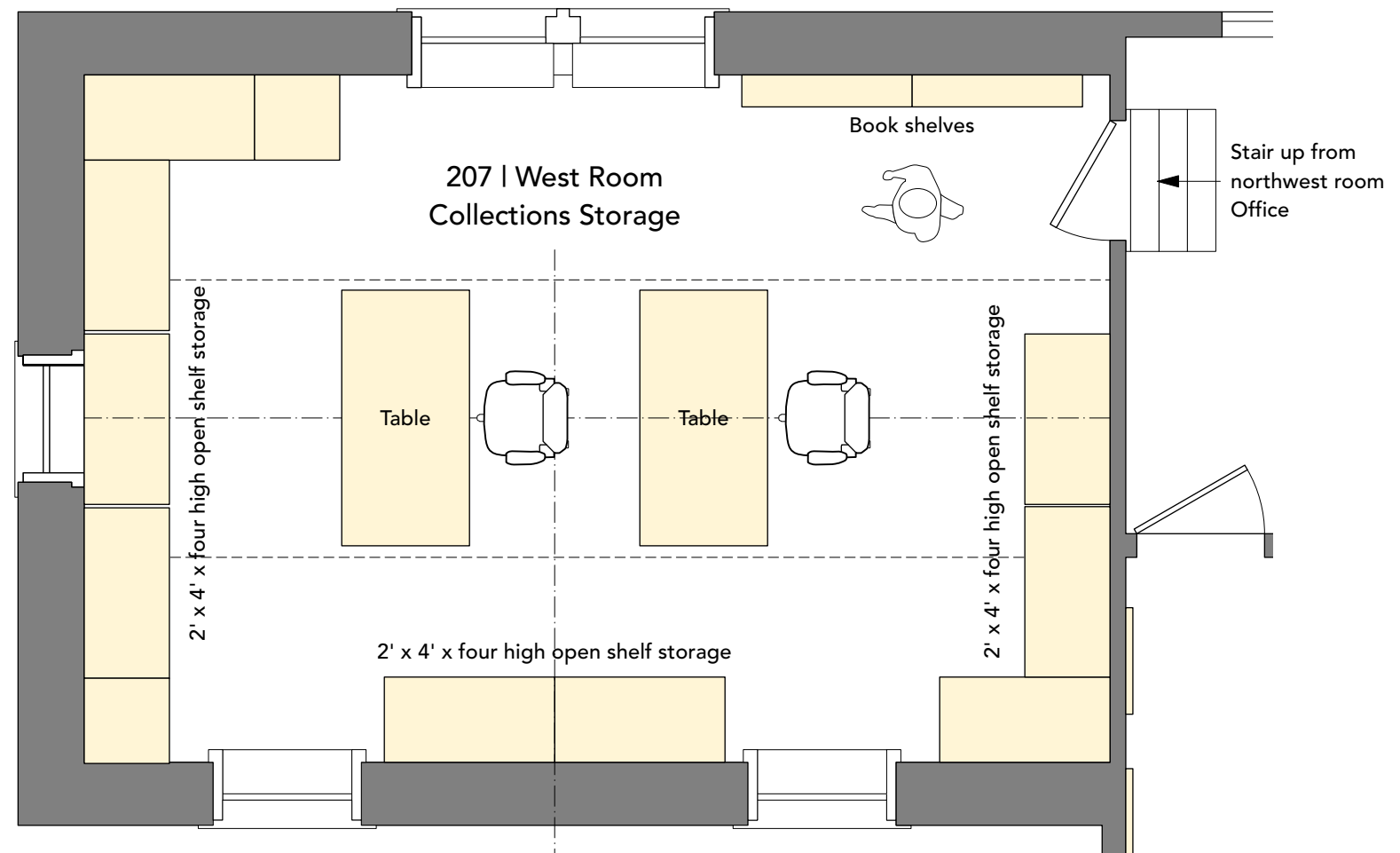
Second Floor West: Collections Room

KEY DECISIONS

The second floor West Room is primarily intended to store objects from the collection and to provide work space and equipment for conservation, cataloging and research of the collection.

The room layout shown here, with storage shelving located around the perimeter, reflects a strategy to address a lower than normal allowable weight for people, furnishings, equipment and collections materials. Refer to the following page for weight considerations.

The Collections room also intended to accommodate board and staff meetings. Work tables located at the center can be configured for group meetings of 8-10 people.



Second Floor West: Collections Room

WEIGHT CONSIDERATIONS

The maximum allowed weight is 50 lbs. per sq. ft. x 390 sq. ft. = **19,500 lbs.**

Storage weight

Assuming 10 four shelf high storage units arranged around the perimeter holding 12 boxes each x at 35 lbs. per box (the weight of a bankers box packed with paper) = **4,200 lbs.**

Other loads

Two desks at 150 lbs each & two chairs at 20 lbs each = 350 lbs

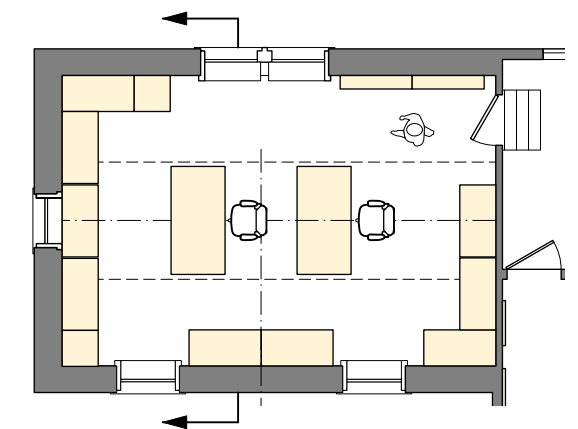
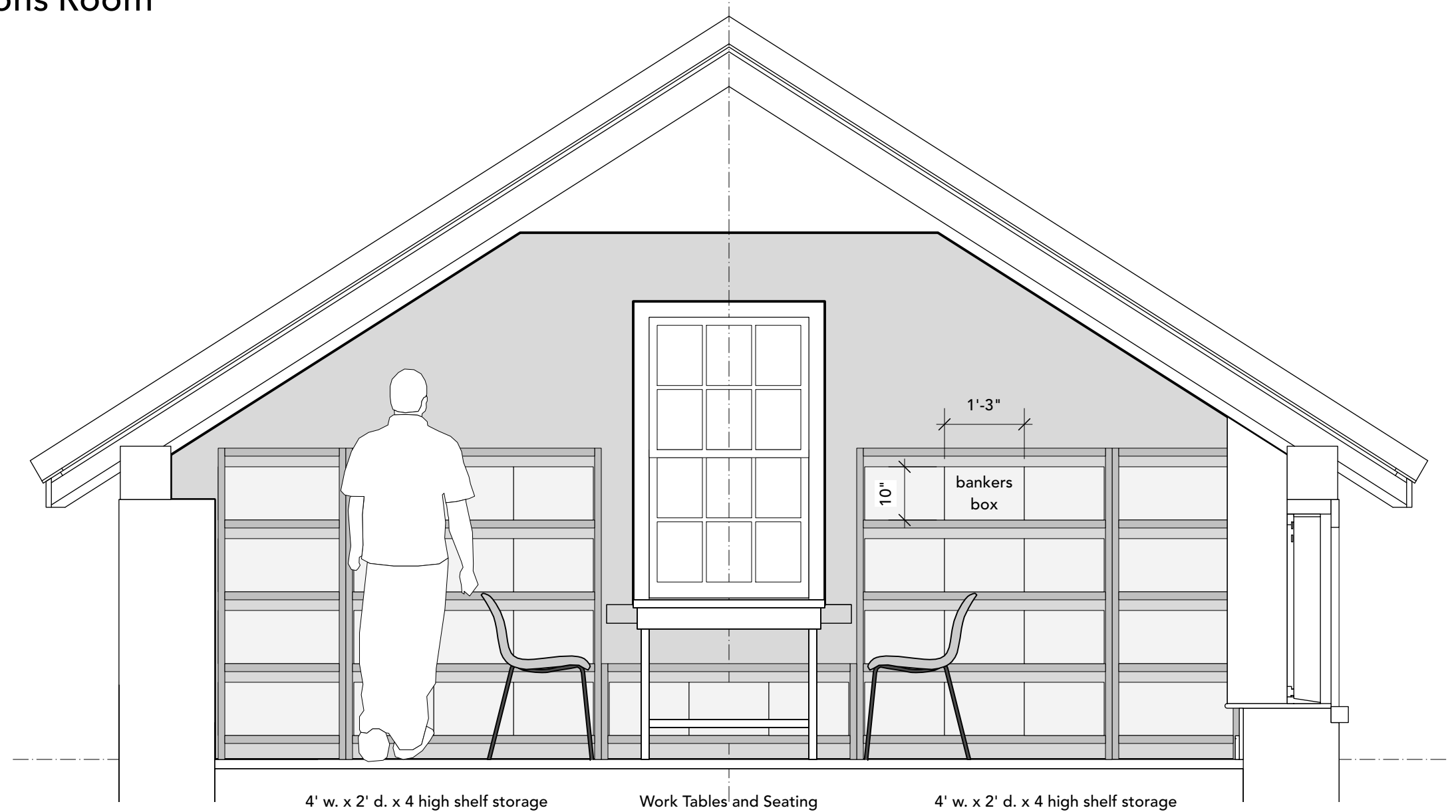
Four people at 200 lbs each = 800 lbs

Two bookshelf units at 250 lbs each = 500 lbs

Miscellaneous computer equipment = 200 lbs.

Total other = **1850 lbs**

Total storage and other loads = about **6000 lbs**



Key Plan